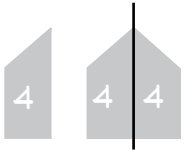


HOW TO ASSEMBLE YOUR PDF PATTERN

PDF Pattern Symbols



This house symbol can be found on one or both sides of each pattern page. When assembling your pattern, match each house to the house with the same number. The roof should always point up.



The smaller house symbol is used to match up the top and/or bottom of each pattern piece by row.

Assembly Instructions

1. Print out page 1 of your PDF pattern. Make sure your printer is set to print the image at 100% and/or that scalling is turned off.

2. Measure the 3"x3"(7.6cm x 7.6cm) test square. If it is not the correct size, check your printer settings and make sure that your pdf is printing at 100% and that 'shrink to fit' is not selected.

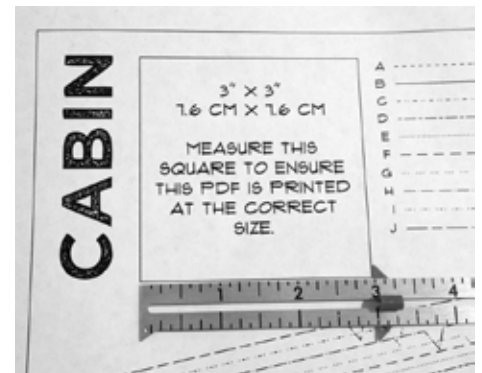
3. Print the rest of your pattern pages and try to keep them in order if you can.

4. Lay out the first page. It will have a house symbol on the left that says 'row 1' and half a house with a #1 on the right.

5. Pick up the next page and trim along the left side. Tape it down to the first page, aligning the borders and matching the house symbol.

6. Continue with the following pages until your right-side house says "next row". The next page will be taped below the starting page.

7. Trim off the top edge of this piece. Tape it down to the 1st piece of the first row, aligning the borders and matching the small house.

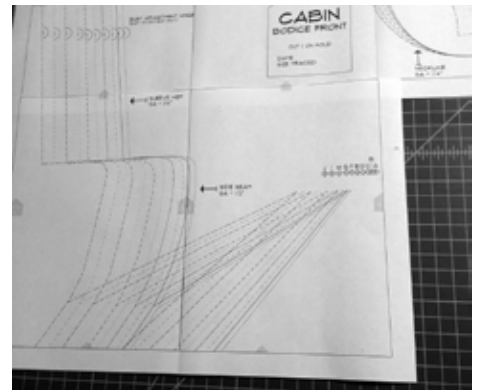
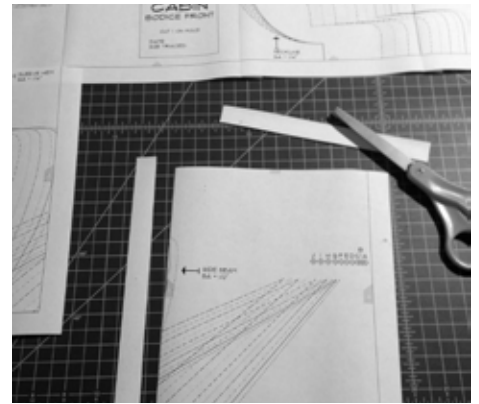


1. Trim both the top and left edge of the 2nd piece in row
2. Tape this piece down, aligning the borders and matching both the numbered house on the vertical border and small house on the horizontal border. →

2. Trim the top and left sides of the next few pieces until, until you reach the “next row” house symbol.

3. Tape and align the rest of the pages by in each row as you did for the first two. When you reach your last piece, you will see a house that says ‘done’!

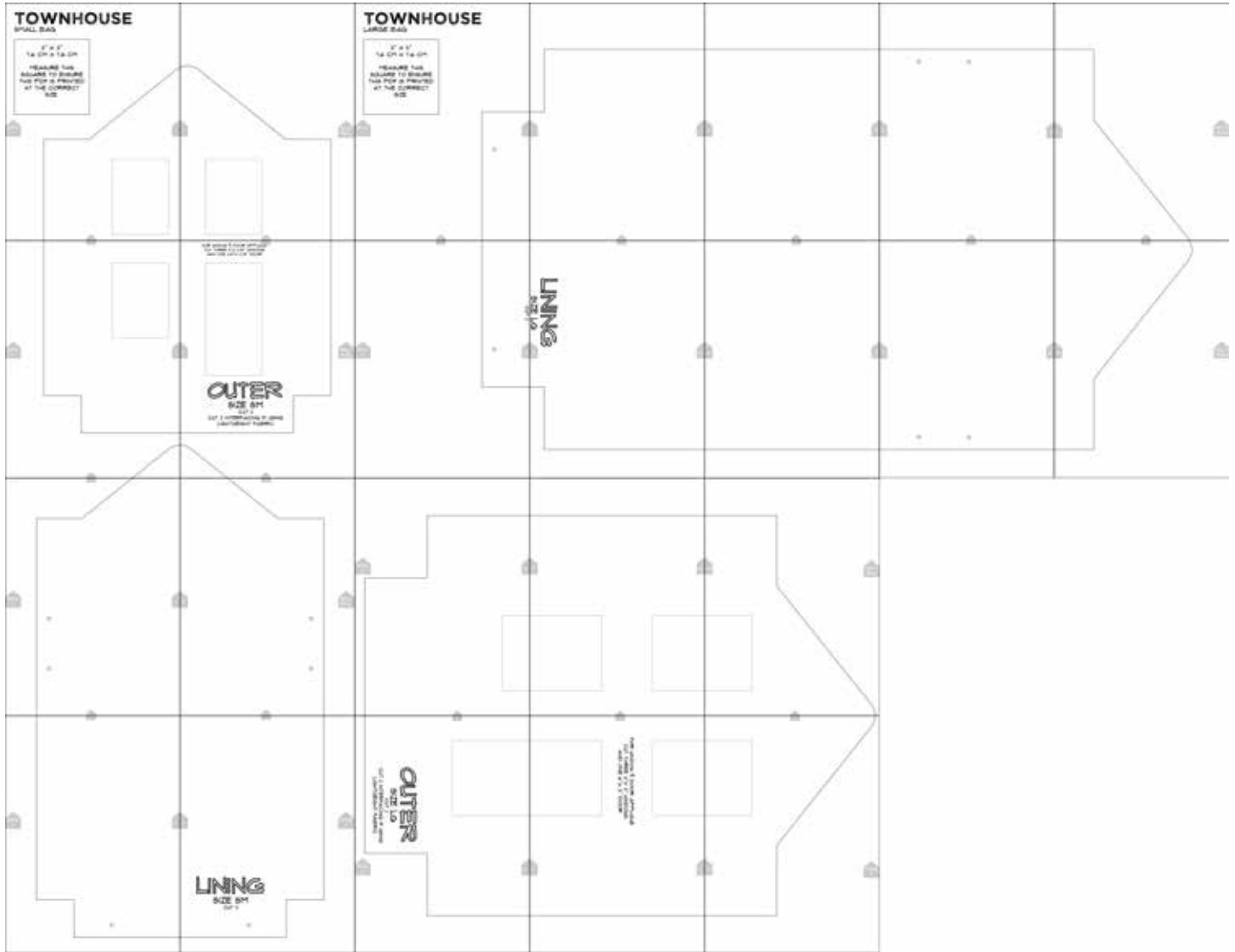
Note: Some patterns include smaller pieces like pockets or facing nested within other pieces to save space and paper. If you plan to cut your printer paper pattern once taped, simply trace the nested small piece or print out the corresponding pages for just that piece and tape together.



TOWNHOUSE LAYOUT

For the small bag, print pages 3-11.

For the large bag, print pages 12-27.



TOWNHOUSE

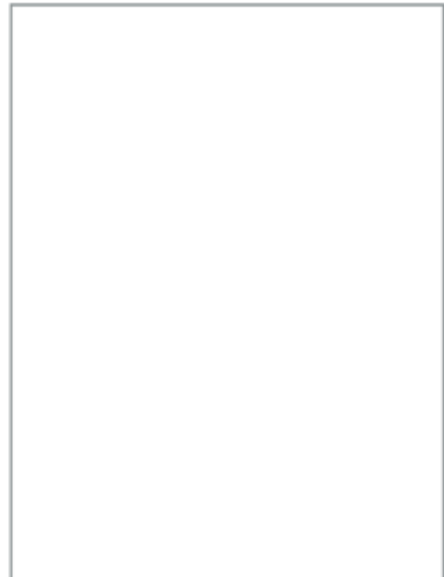
SMALL BAG

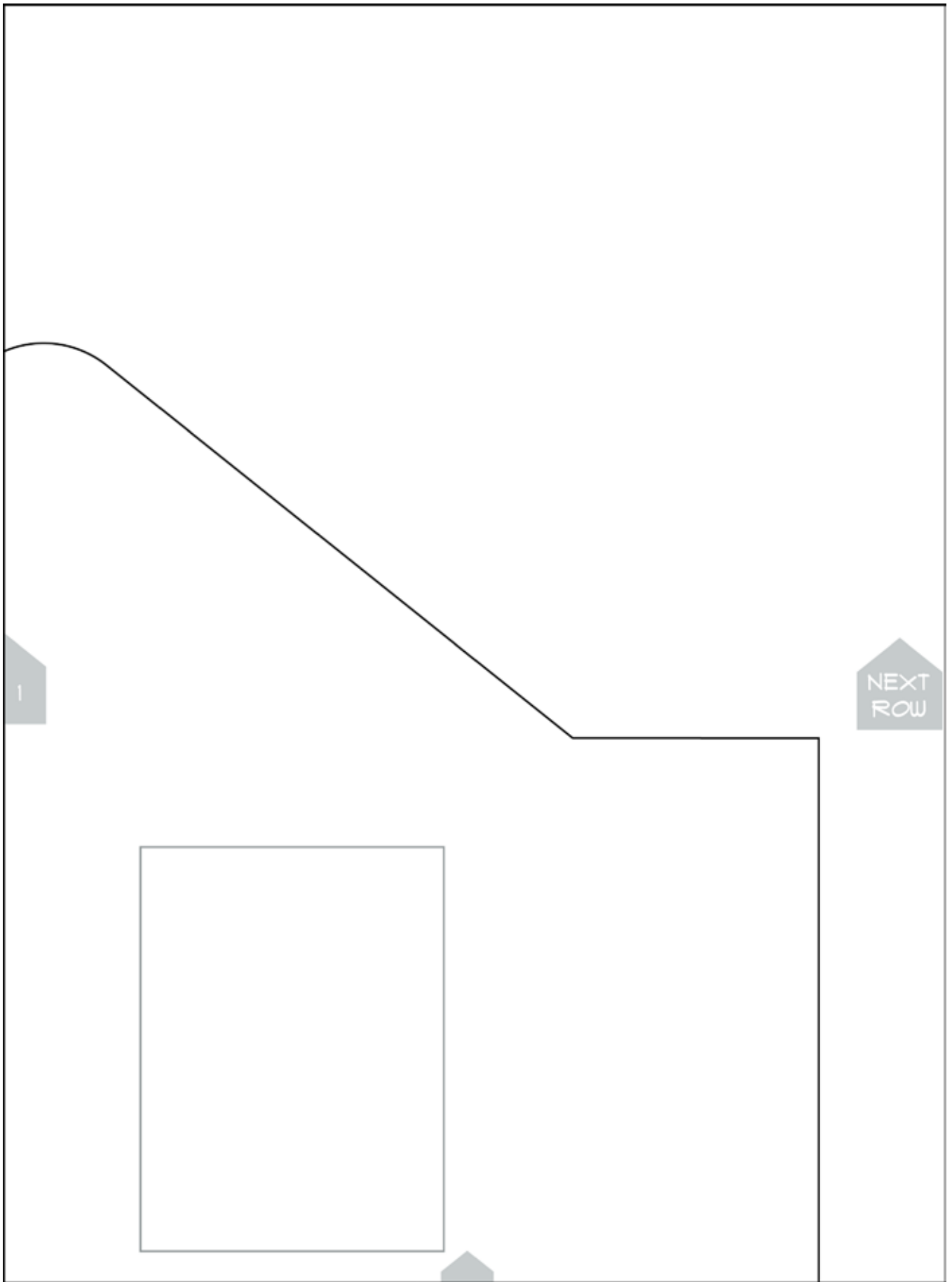
3" X 3"
7.6 CM X 7.6 CM

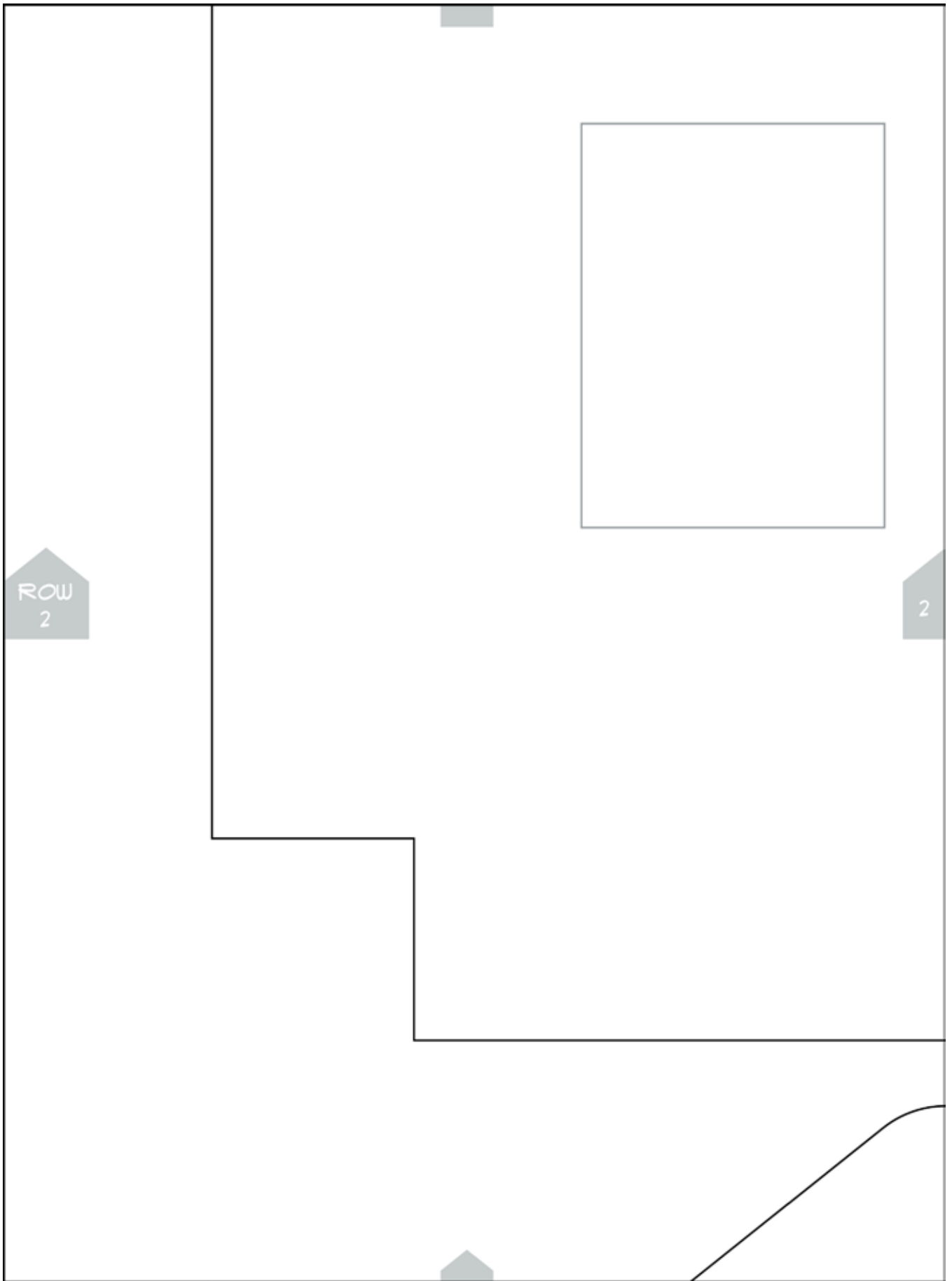
MEASURE THIS
SQUARE TO ENSURE
THIS PDF IS PRINTED
AT THE CORRECT
SIZE.

ROW
1

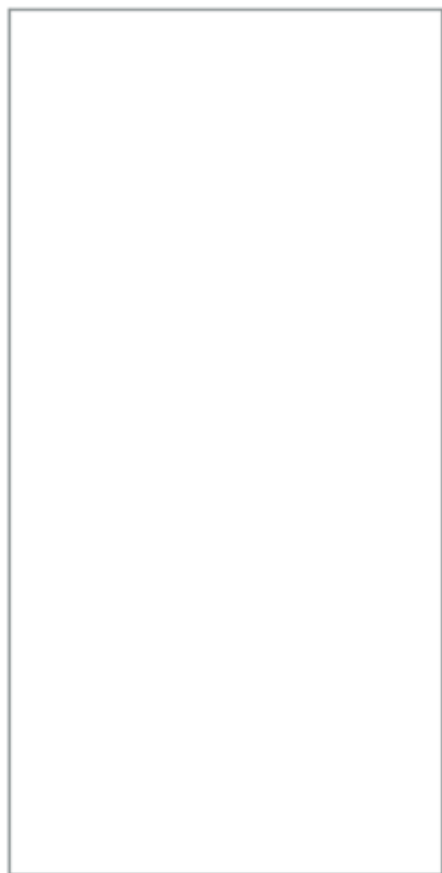
1







FOR WINDOW & DOOR APPLIQUE
CUT THREE 3"X 2.25" WINDOWS
AND ONE 4.5"X 2.25" DOOR



2

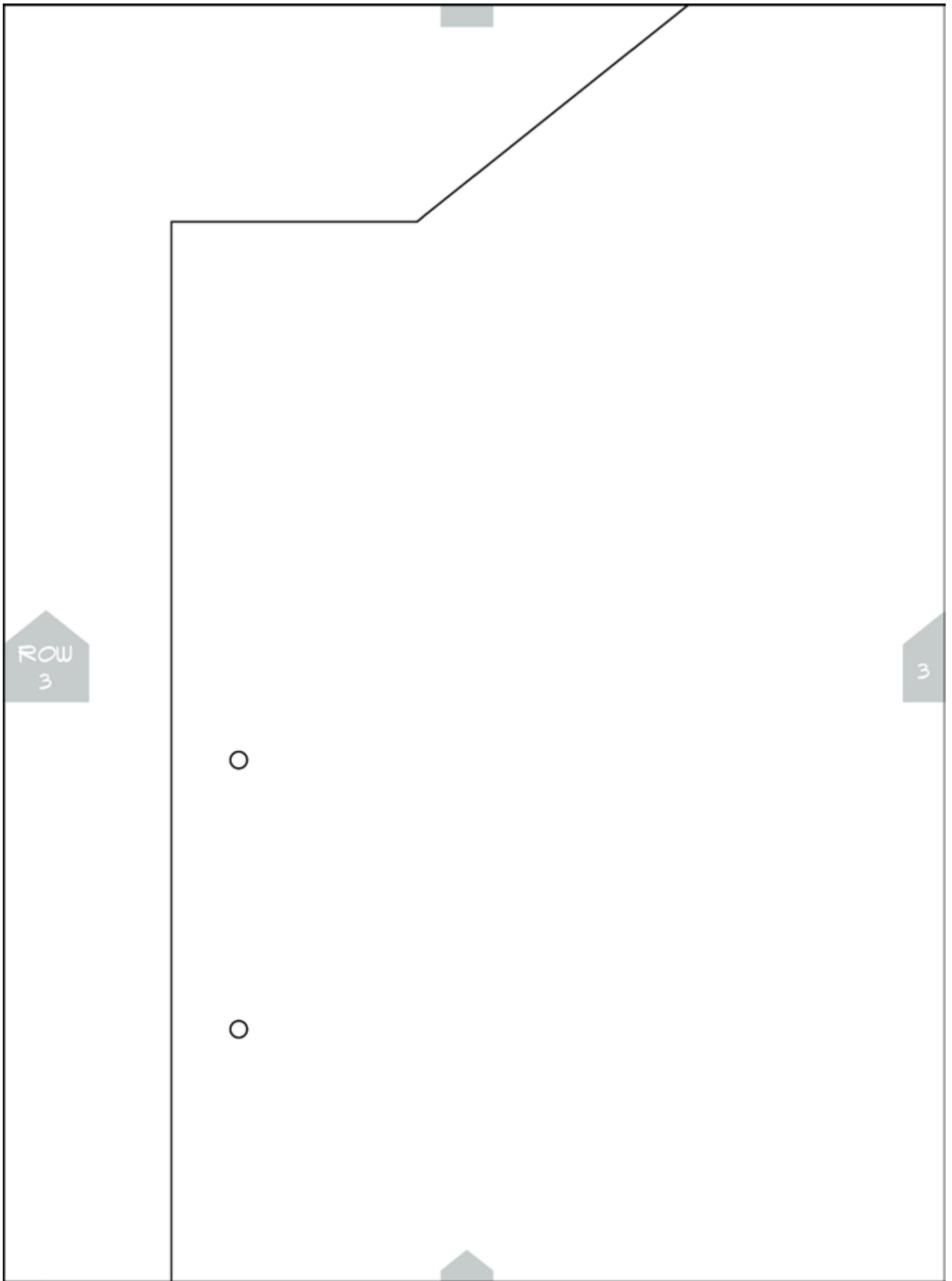
NEXT
ROW

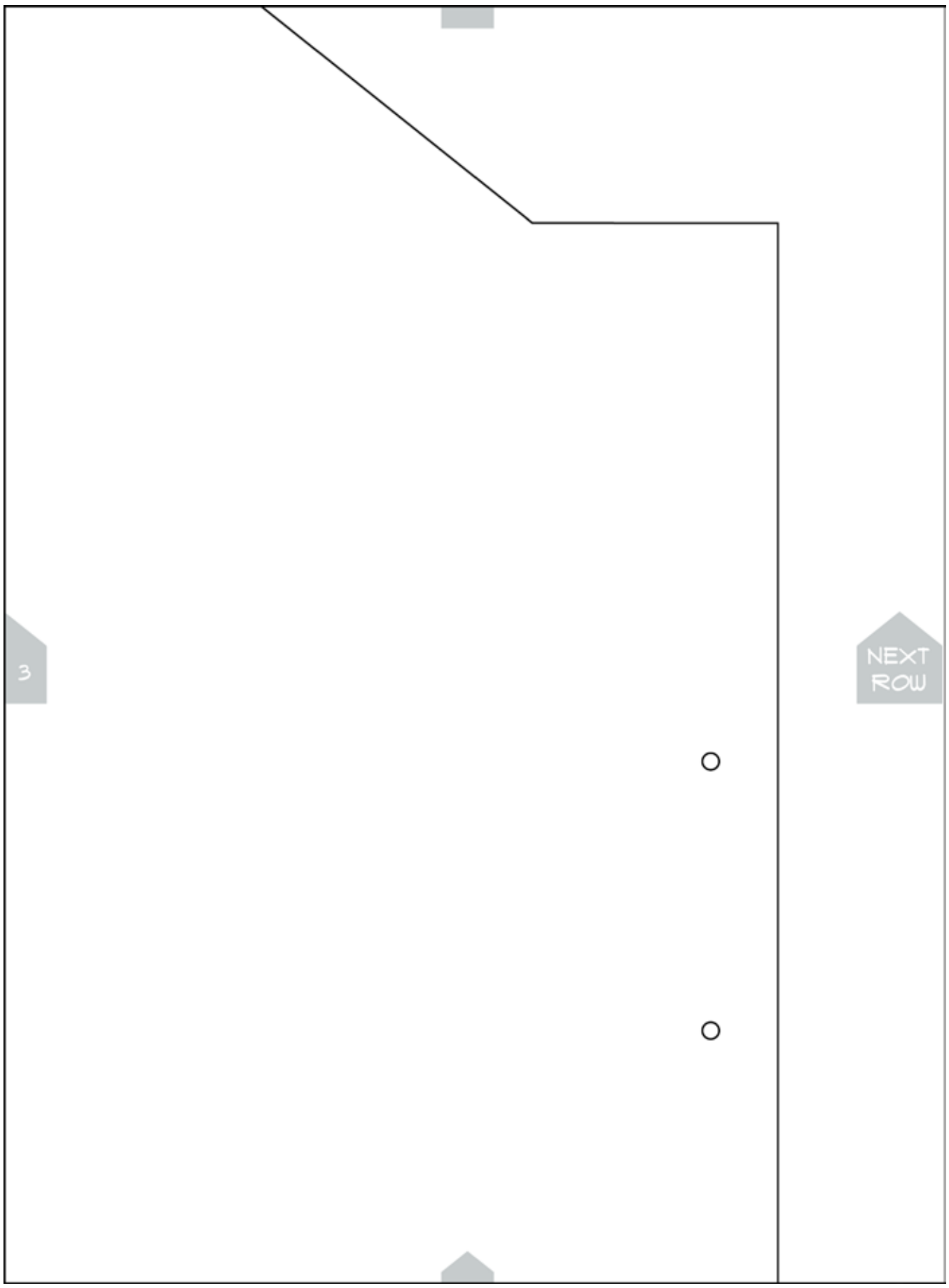
OUTER

SIZE SM

CUT 2

CUT 2 INTERFACING IF USING
LIGHTWEIGHT FABRIC

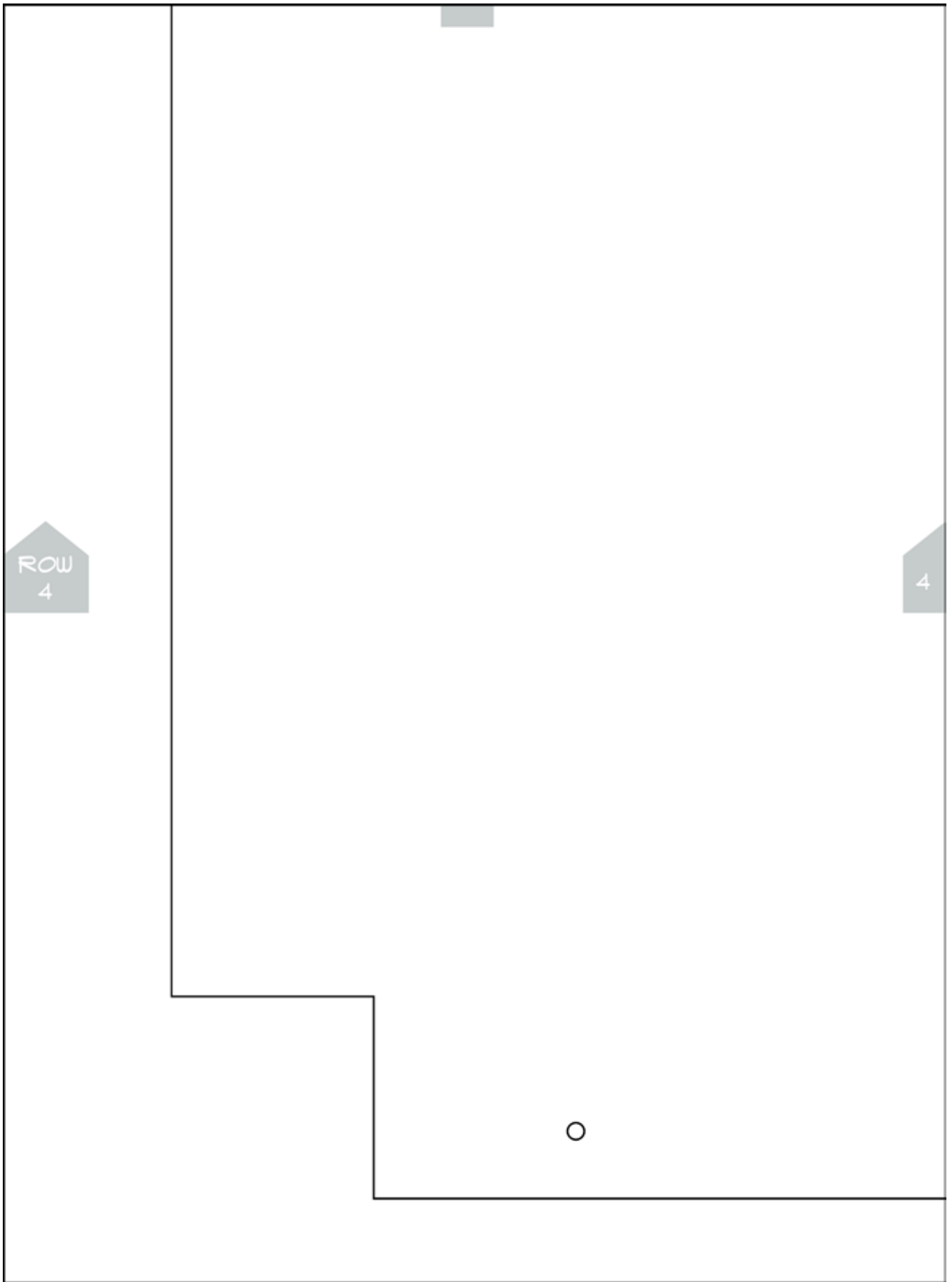


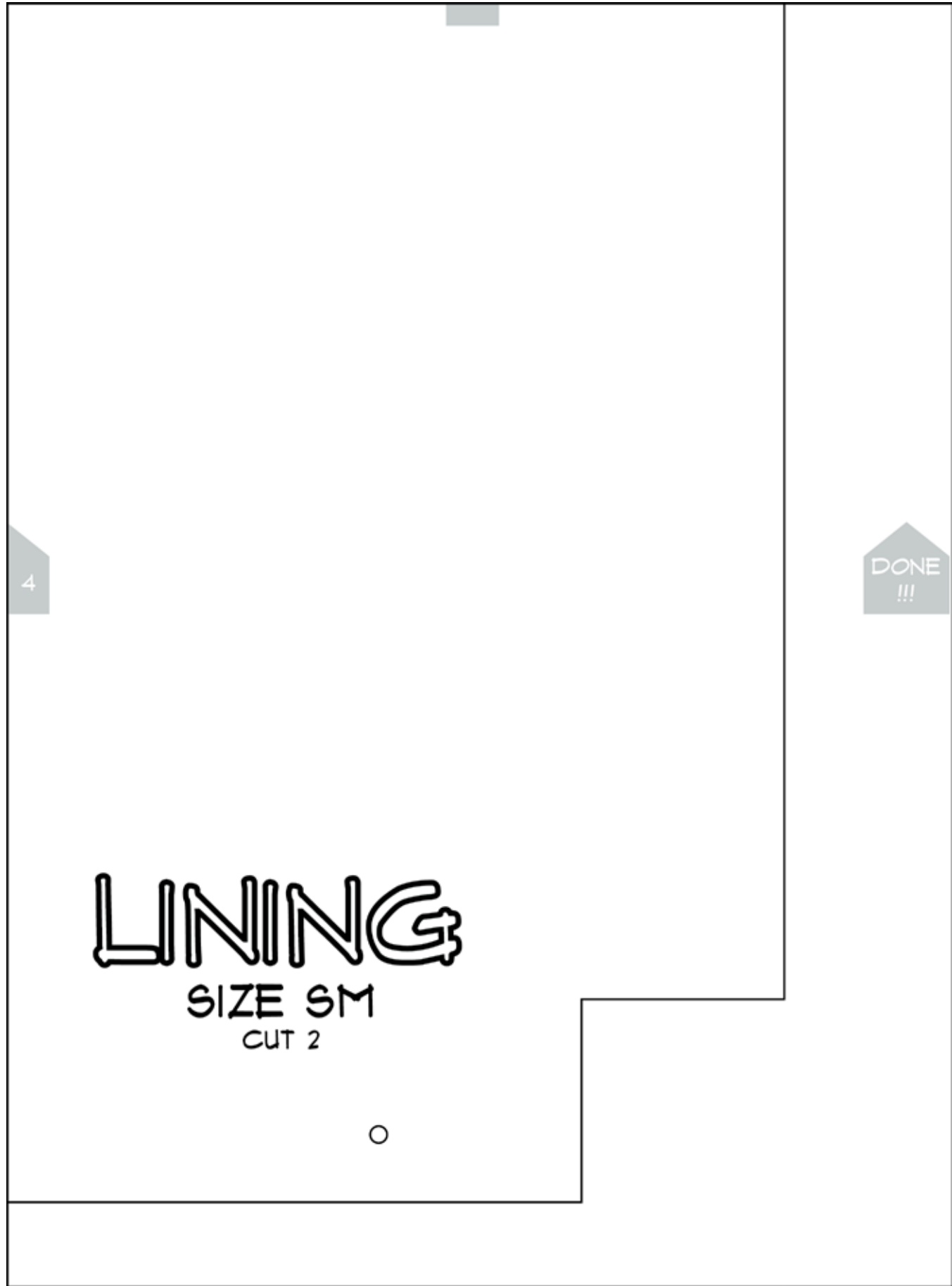


NEXT
ROW

3







4

DONE
!!!

LINING

SIZE SM

CUT 2



TOWNHOUSE

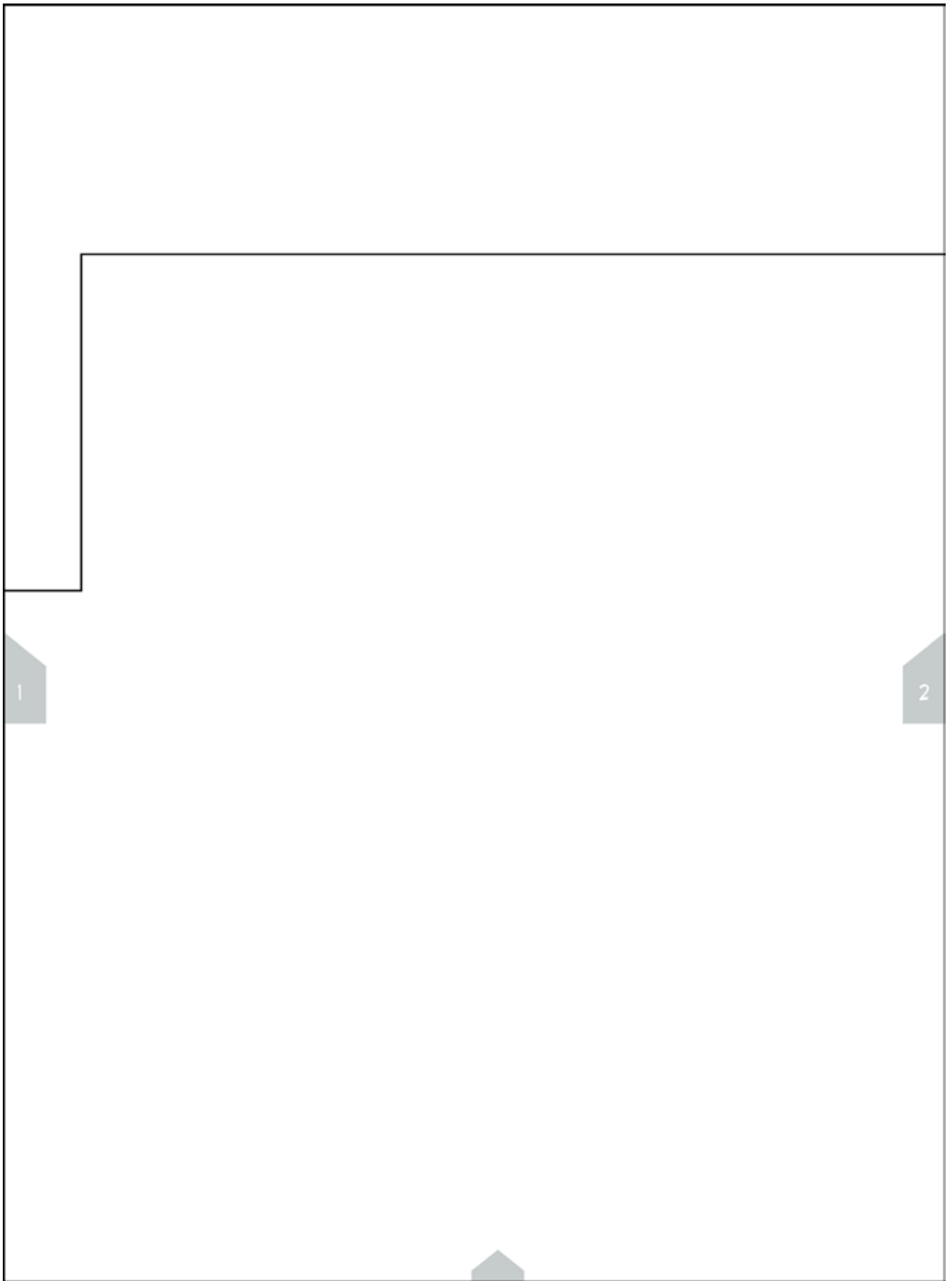
LARGE BAG

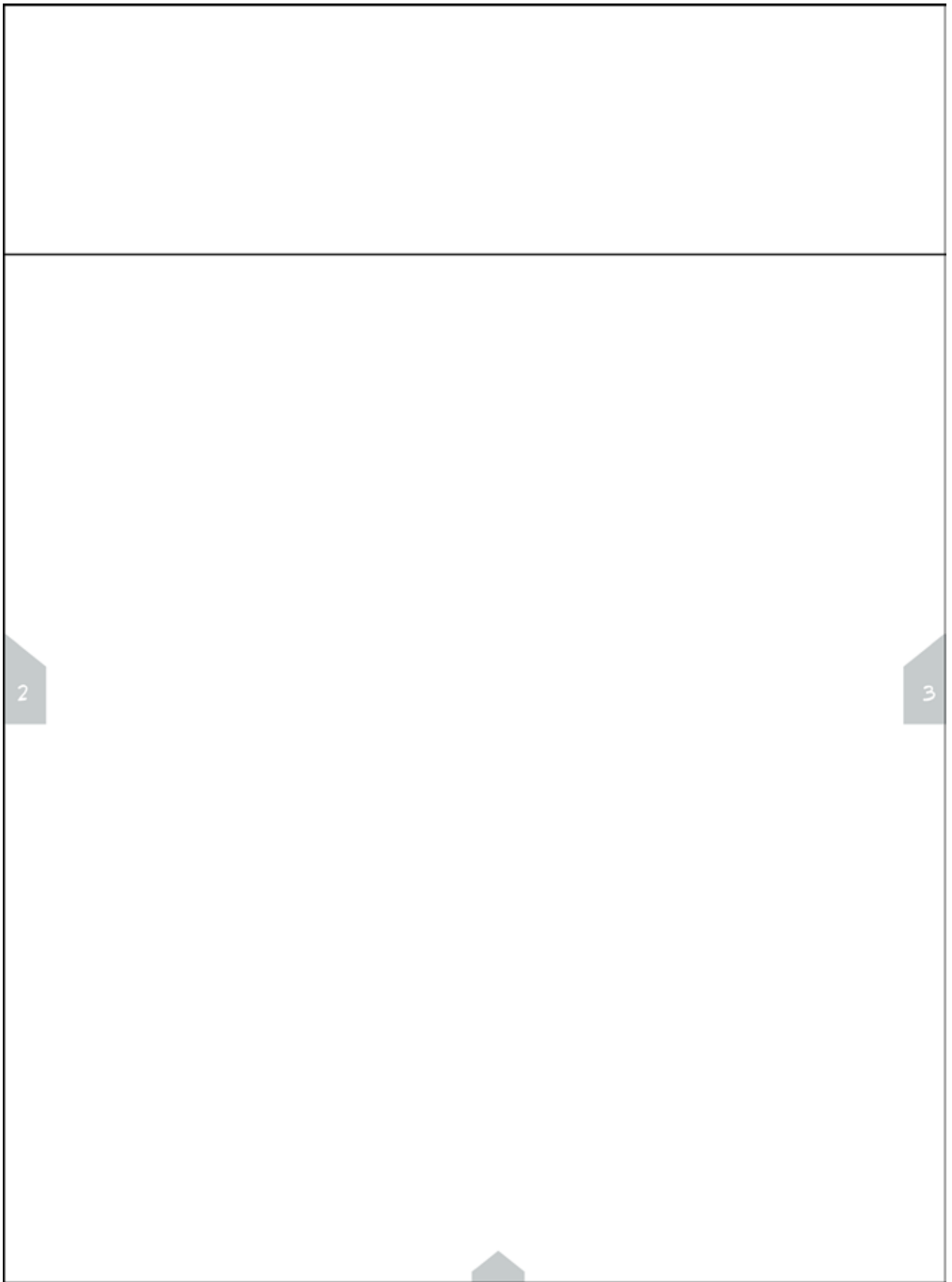
3" X 3"
7.6 CM X 7.6 CM

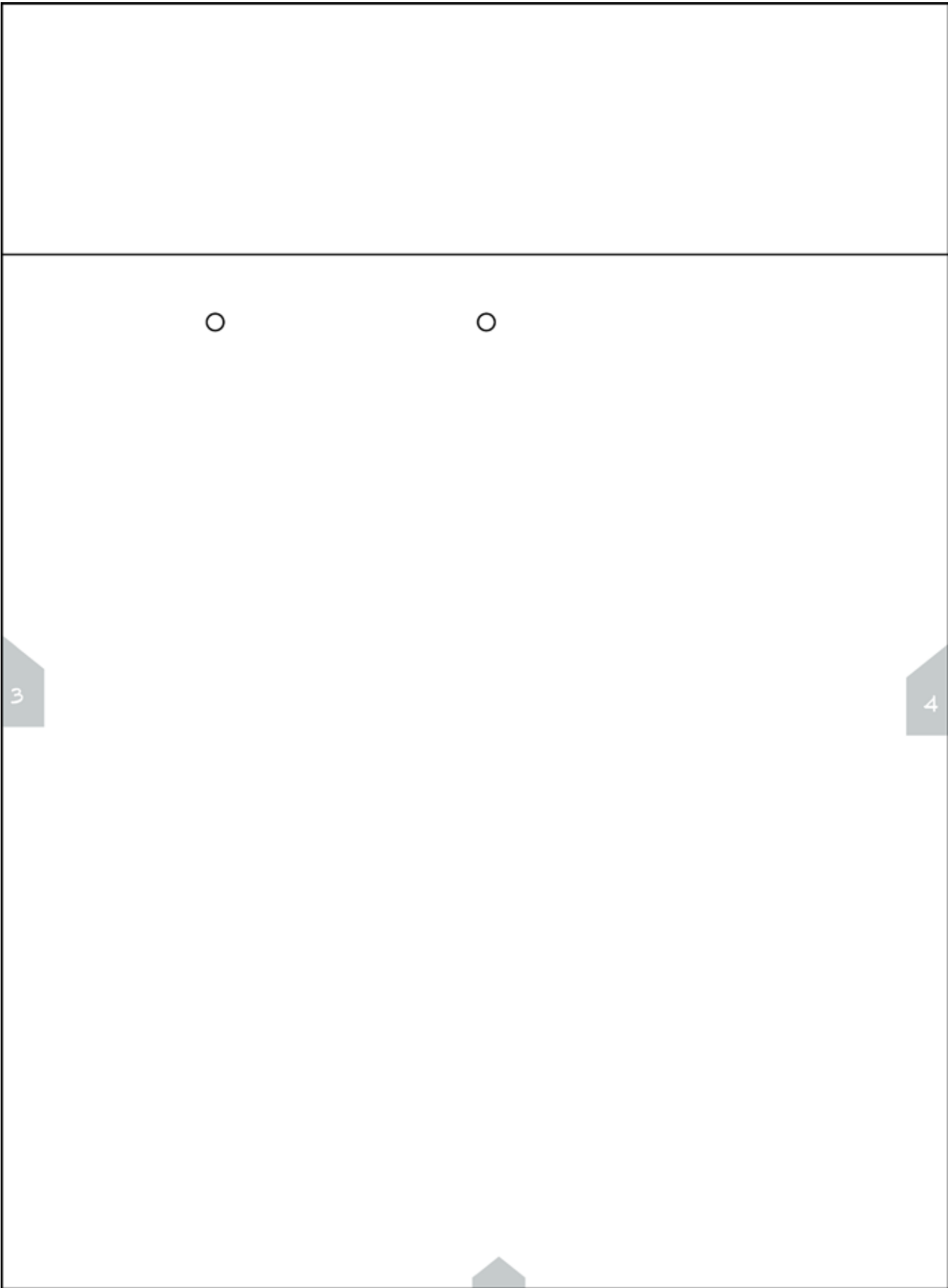
MEASURE THIS
SQUARE TO ENSURE
THIS PDF IS PRINTED
AT THE CORRECT
SIZE.

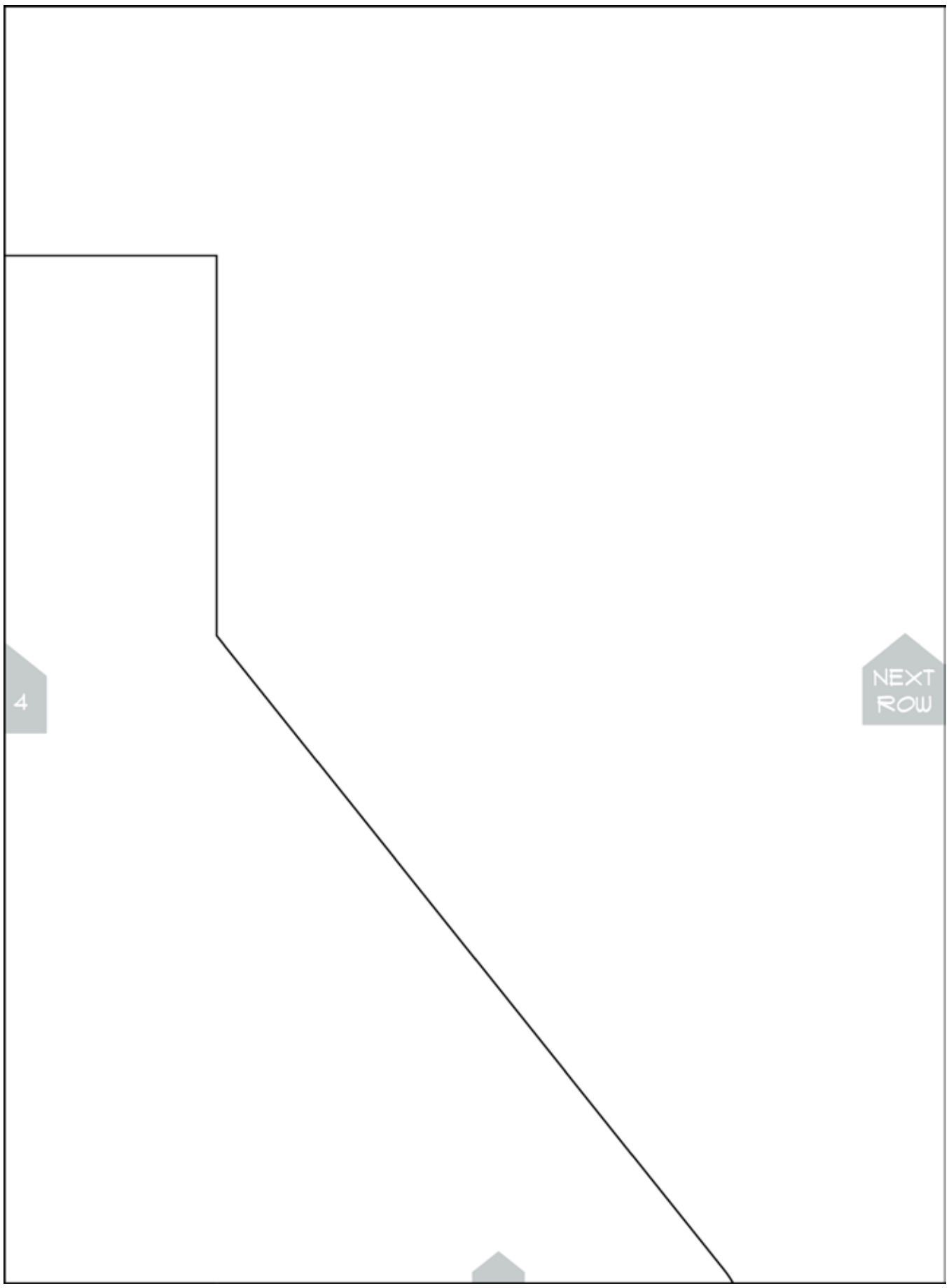
ROW
1

1



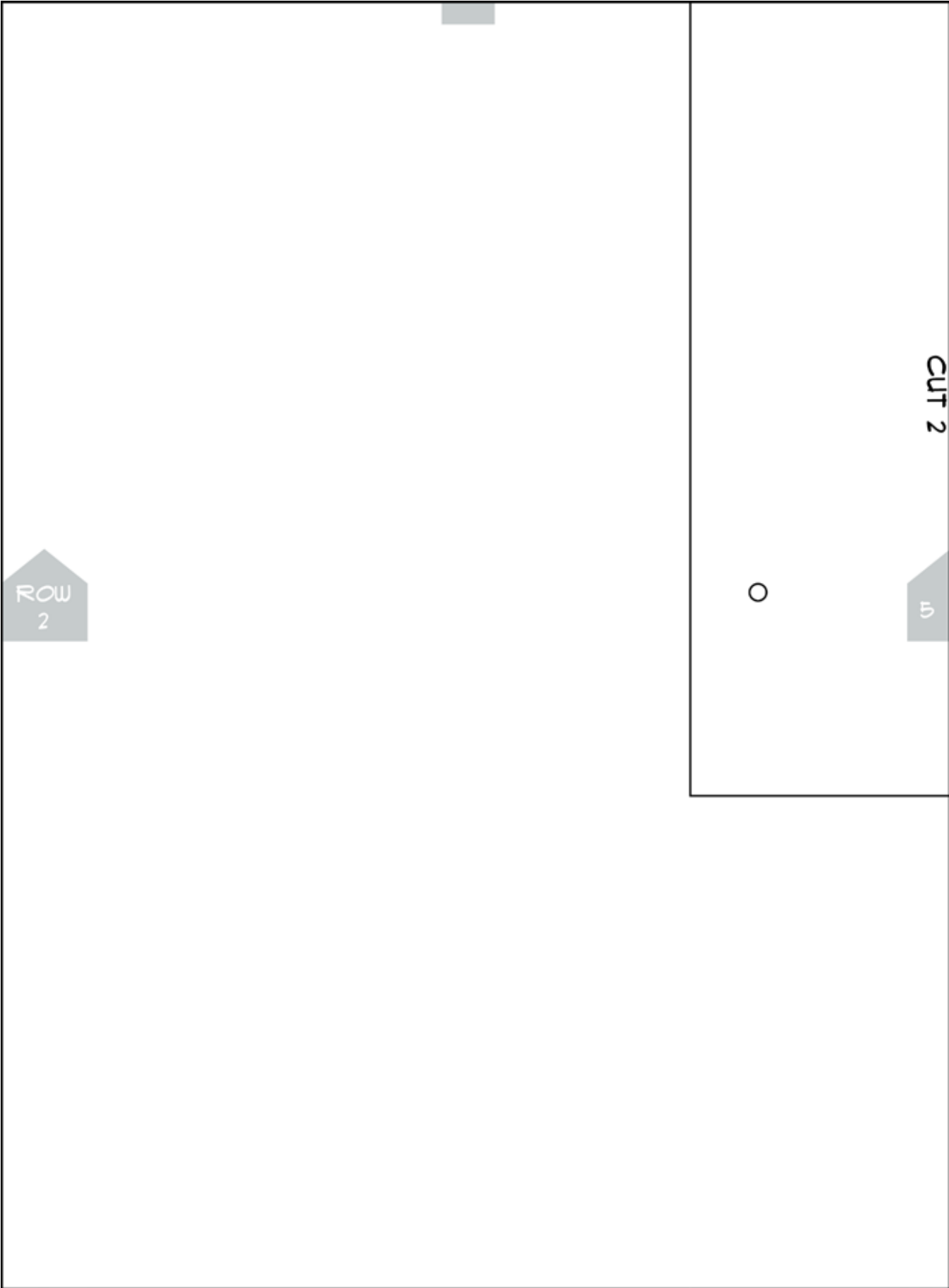






4

NEXT
ROW

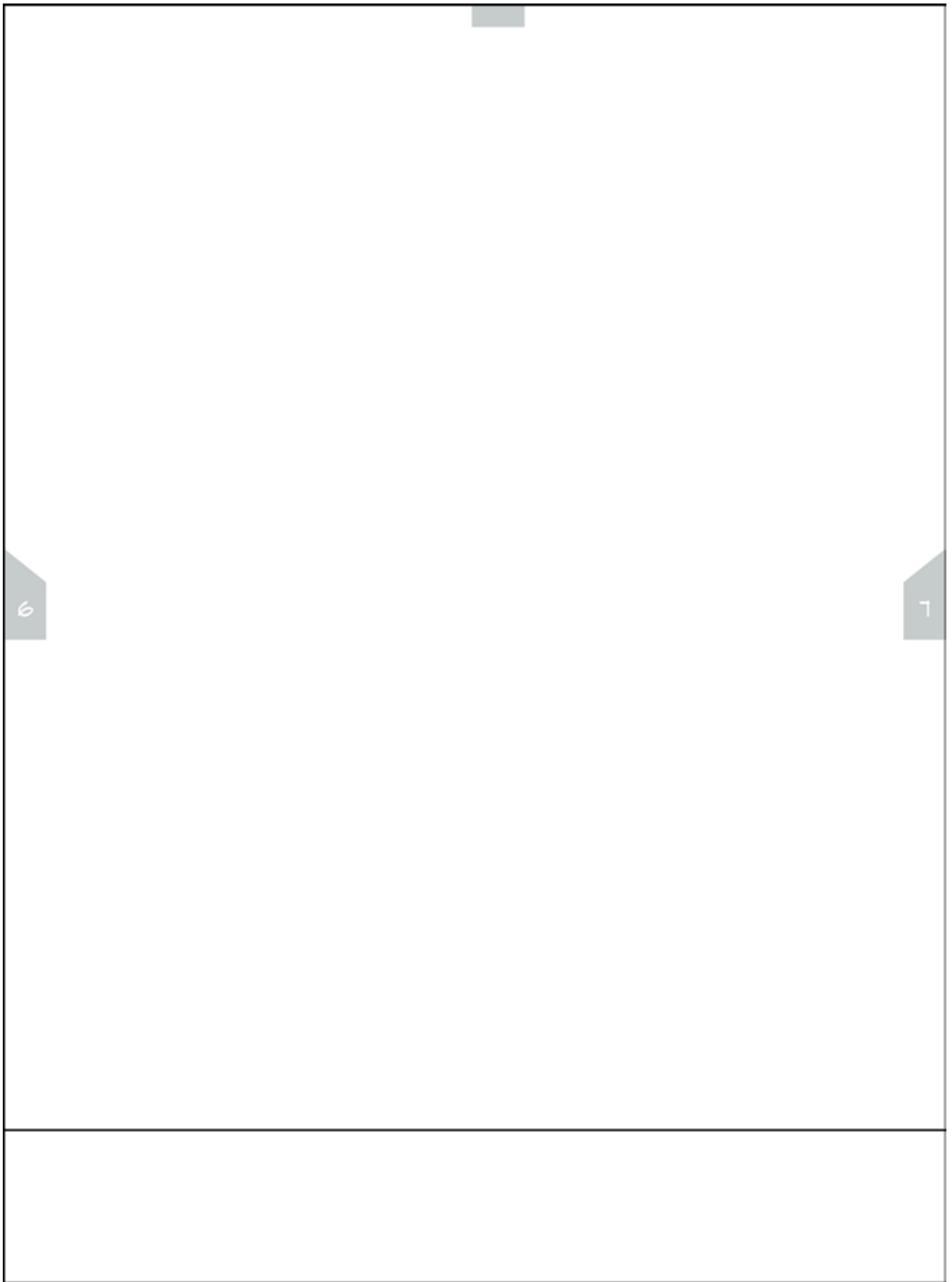


LINING

SIZE LG

5

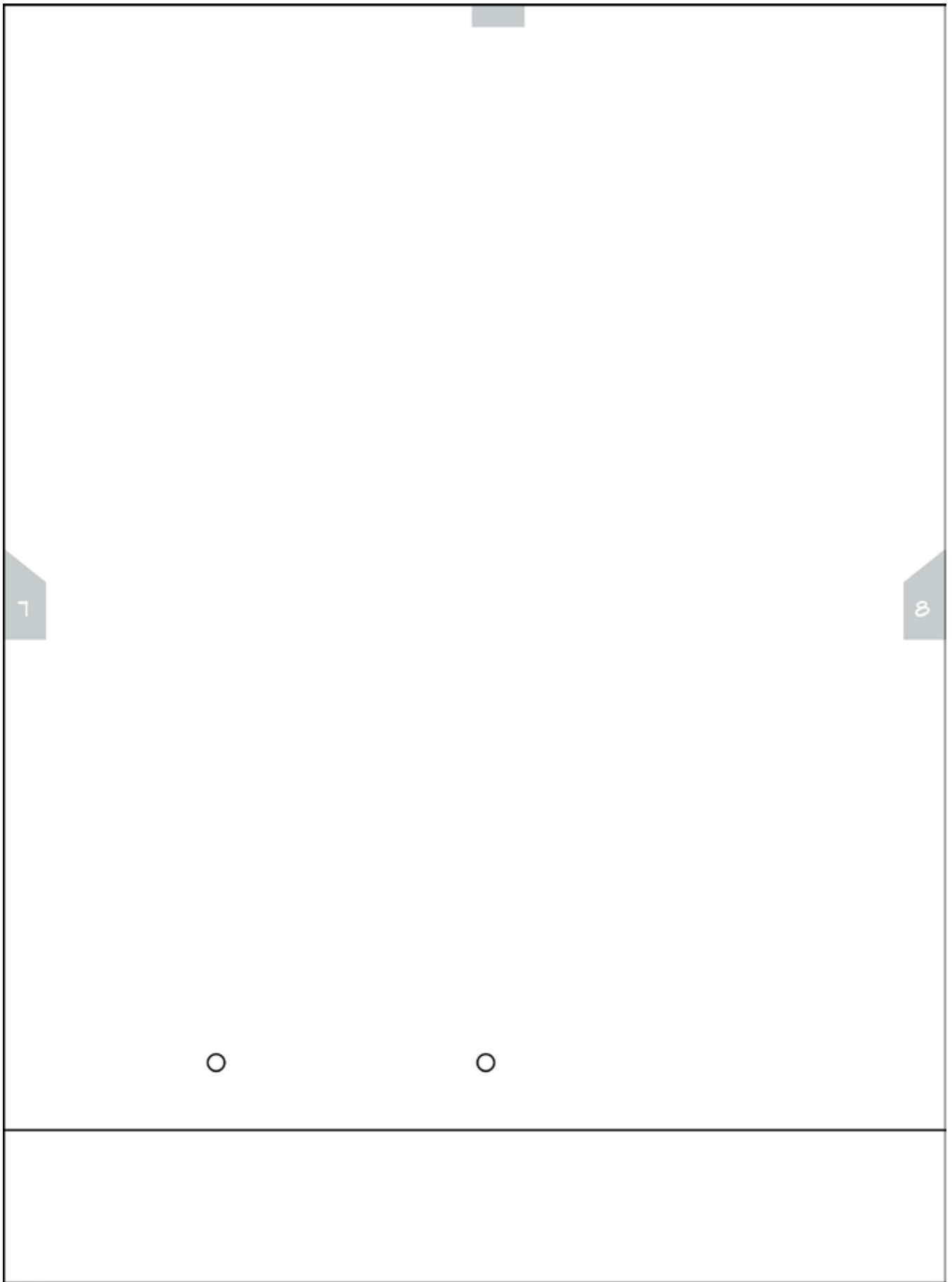
6

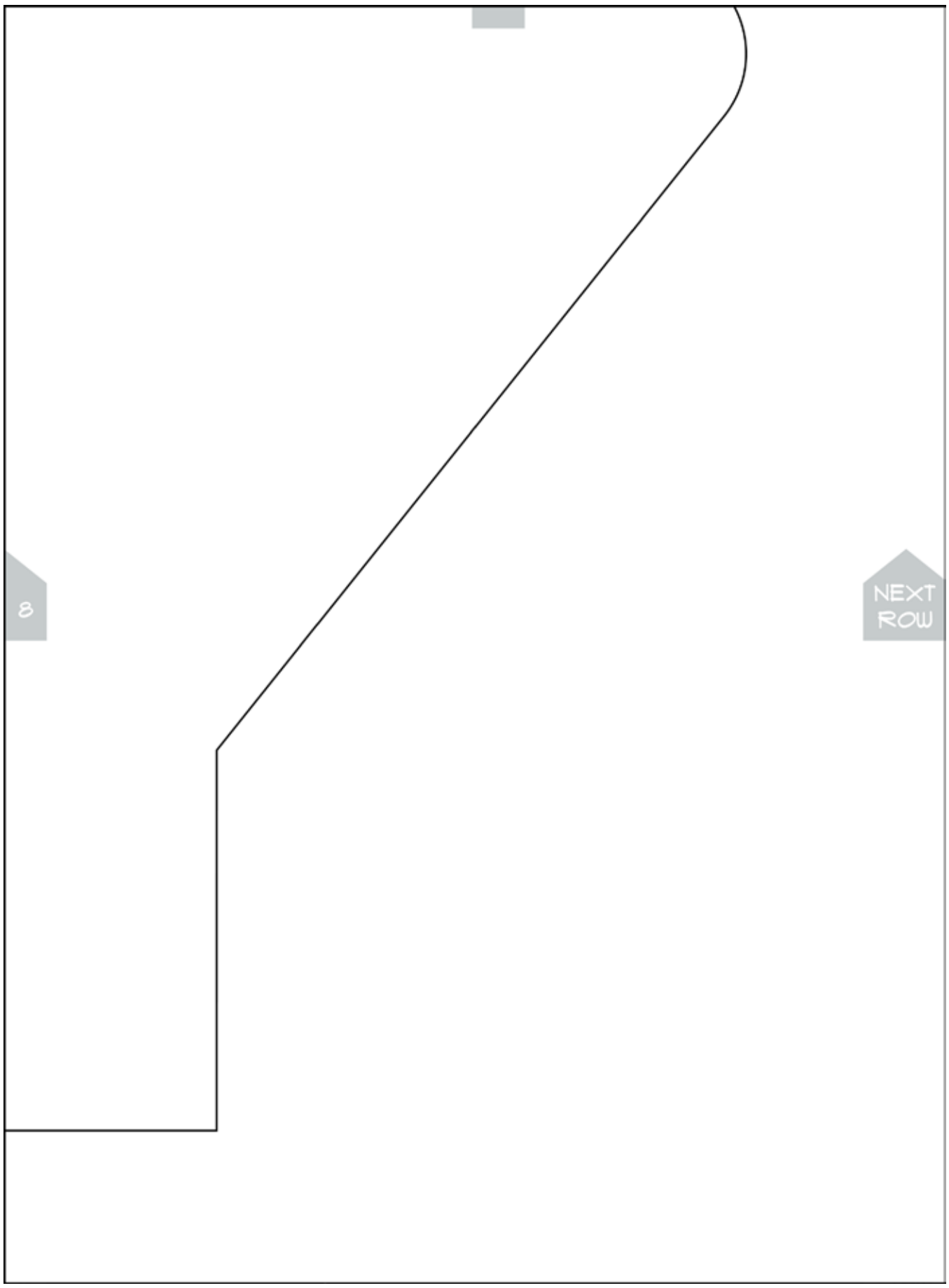


6

7

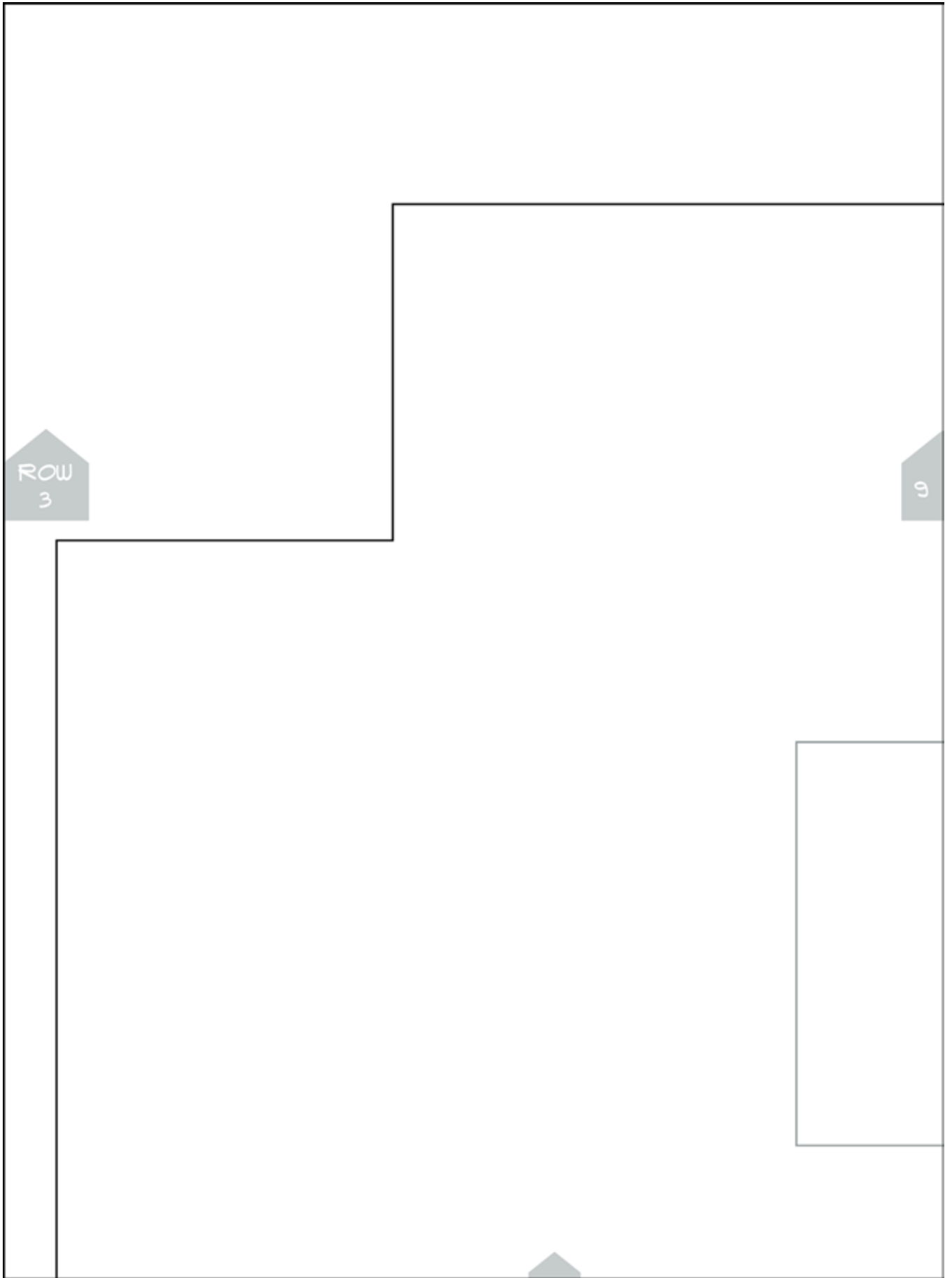
8

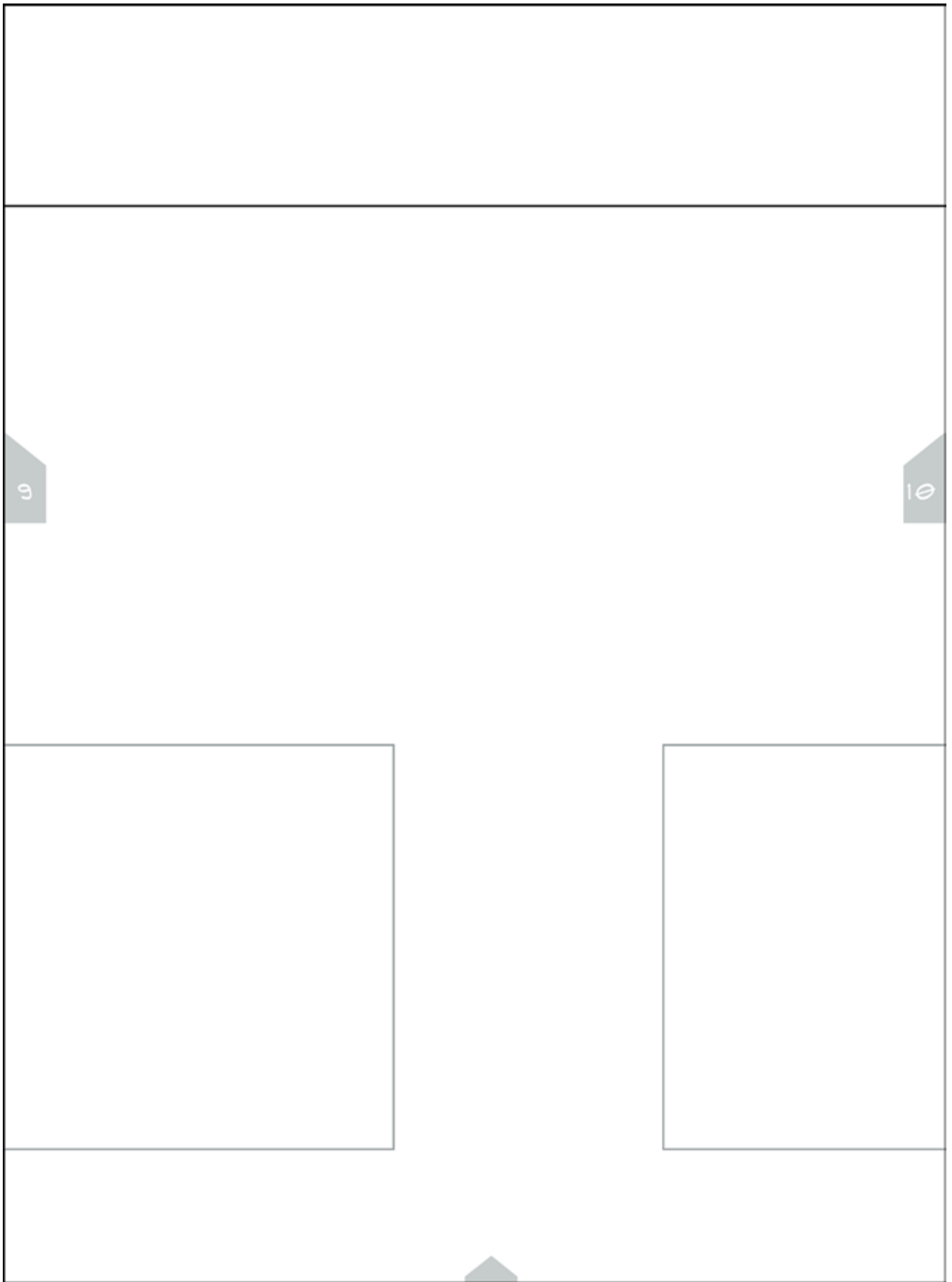




8

NEXT
ROW

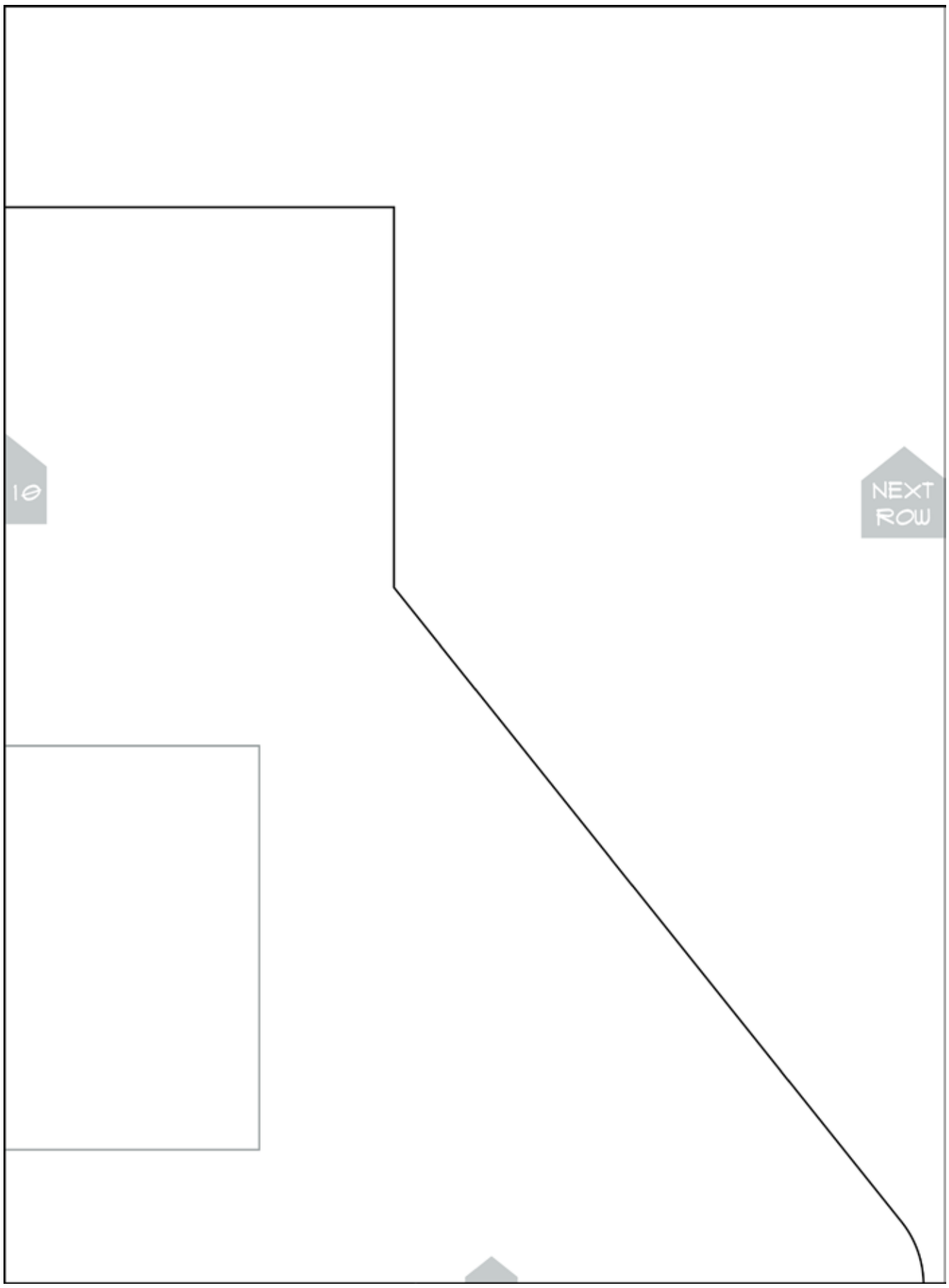




9

10

11

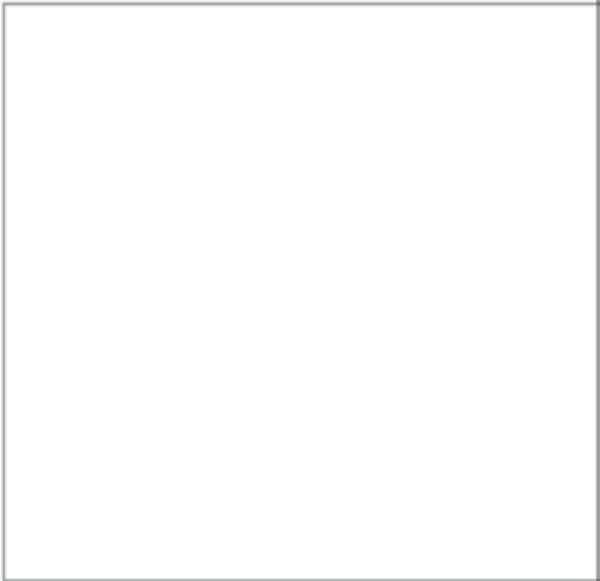


OUTER

SIZE LG

CUT 2

CUT 2 INTERFACING IF USING
LIGHTWEIGHT FABRIC



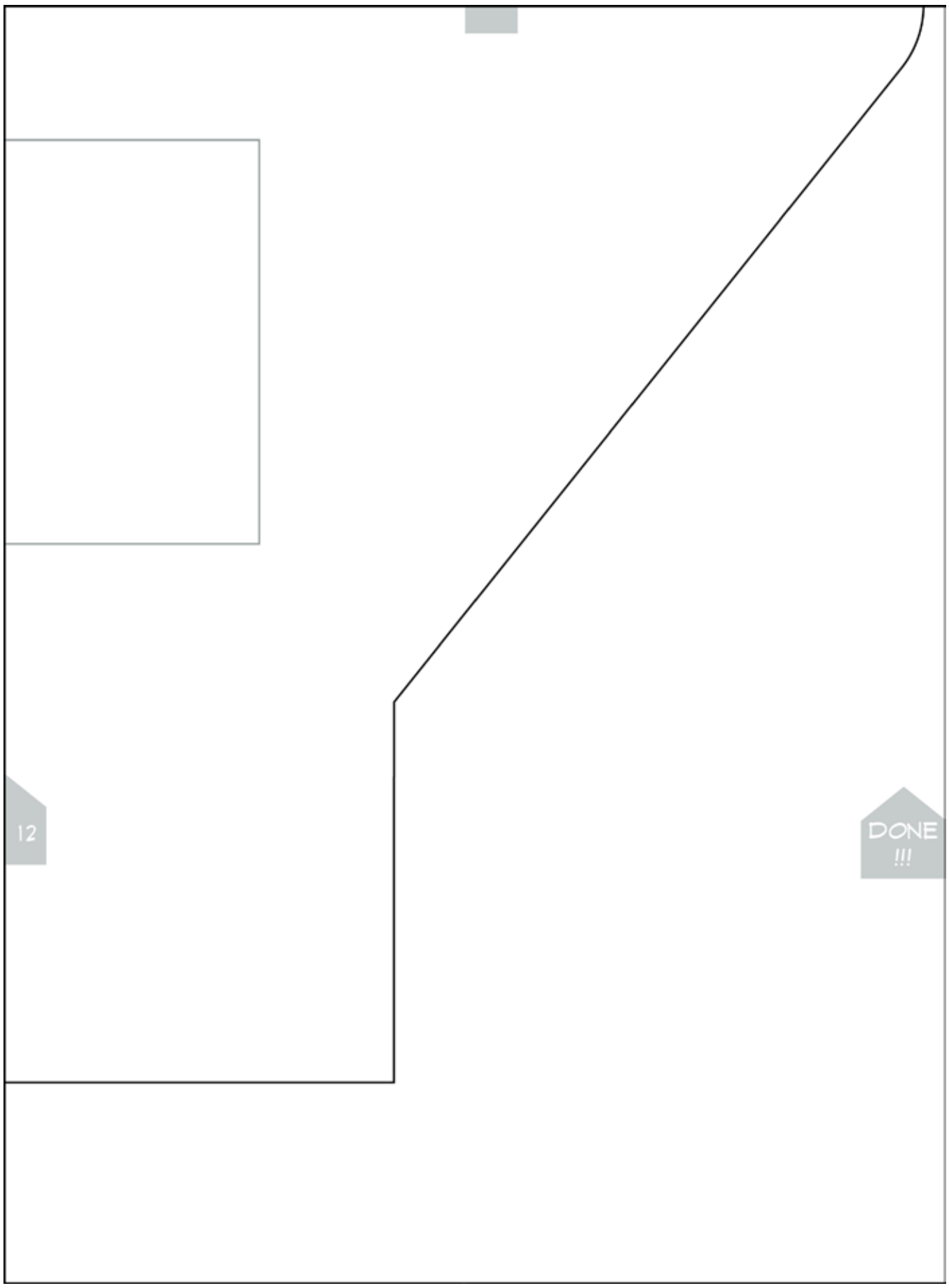
11

ROW
4

FOR WINDOW & DOOR APPLIQUE
CUT THREE 4" X 3" WINDOWS
AND ONE 6" X 3" DOOR

12

11



12

DONE
!!!